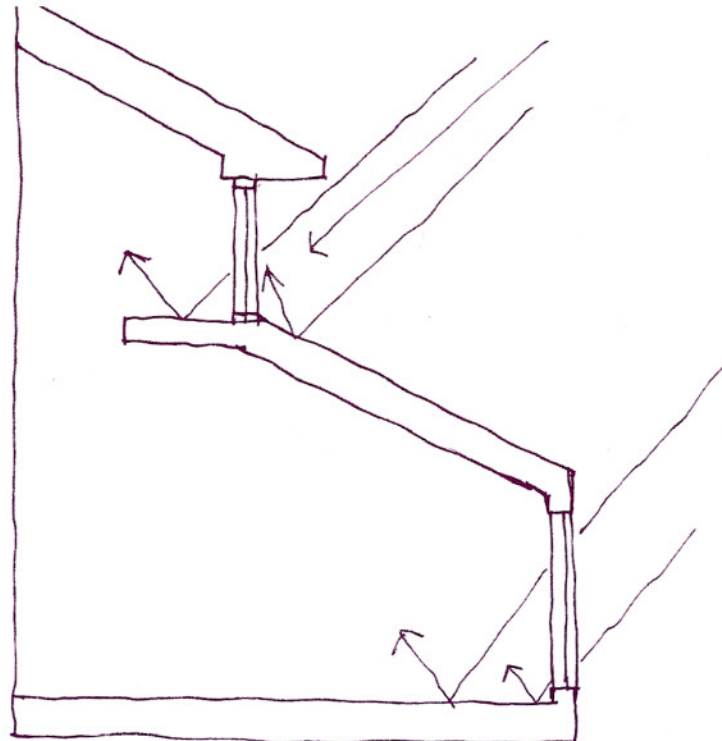
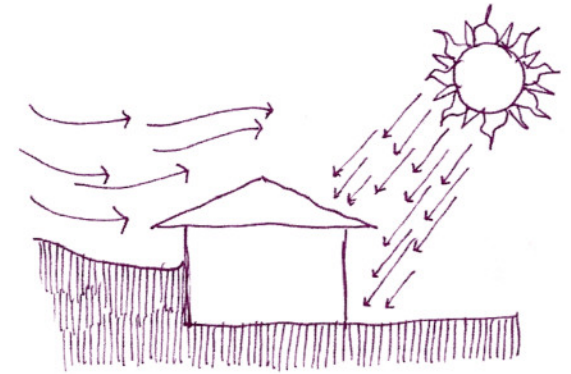


SUSTAINABILITY

- Adapt existing buildings for new uses.
- “Deconstruct” and recycle building parts.
- Avoid skylights because of snow maintenance issues.
- Use earth-berming and structure to protect buildings from northwest winds.
- See the “Common Principles” section in the introduction to this chapter for more recommendations on sustainability.



Daylighting should be maximized by adding high windows for additional daylighting



Earth berms protect buildings from northwest winds



Natural landscaping on prevailing wind side of building