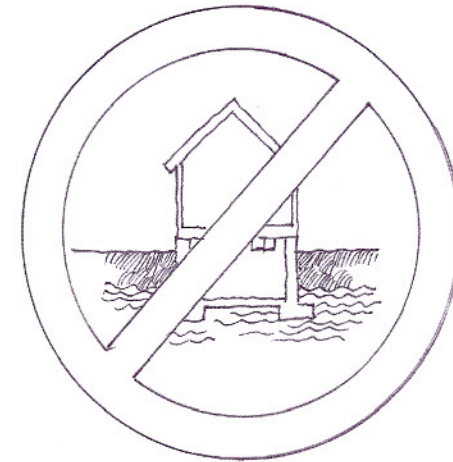
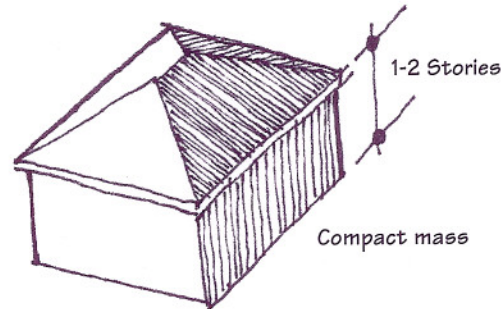


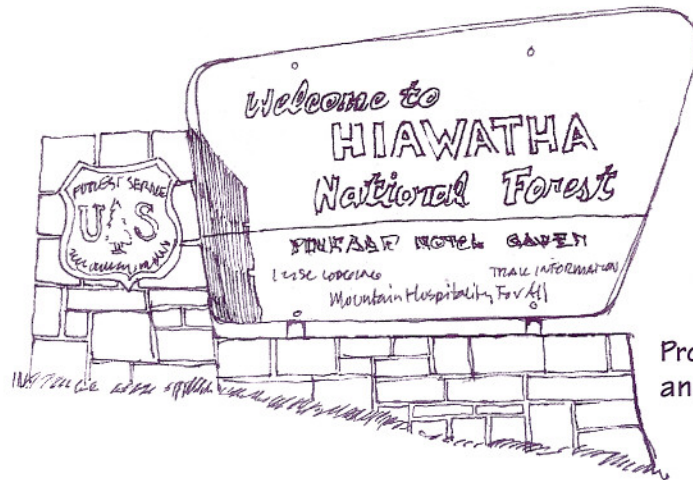
**MASSING AND SCALE**

- Design buildings that feature compact footprints to retain and conserve heat; with compact footprints, buildings can be up to two stories tall.
- In frequently visited areas such as recreation facilities, make the base of the structure strong to express solidity and mass and to protect the building from weather and animal damage.
- Make the base prominent and visible by raising it and creating color and texture that matches the surrounding landscape.
- Step bases to adjust to slope.

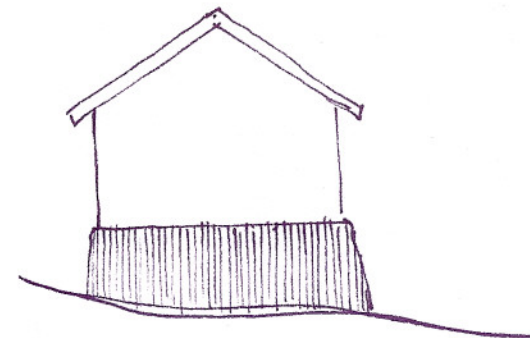
- Avoid basements—they are expensive to build and maintain because of high water tables and they create universal access problems.
- Make the bases of portal signs substantial so that they appear to be anchored to the earth.



Basements are expensive to build and maintain



Prominent, raised base anchors sign to land



Base accommodates site